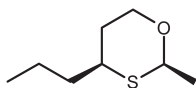


Fruity

Citrus

OXANE  
969380

1,3-Oxathiane, 2-methyl-4-propyl-, cis-

## OLFACTIVE NOTE

An extremely powerful ingredient with a tropical green passion fruit note and a grapefruit-like tartness.

## REFERENCES

CAS number: **0059323-76-1**FEMA number: **3578**REACH number: **01-2120065073-64**Stabilizer: **None added**Solvent: **50% of Triethyl Citrate**Firmenich code: **969380**

## PERFUMERY USAGE

A unique material that is well worth the time to study its effects in perfume blends. Obviously good in citrus and exotic fruity notes but wonderful in jasmin, rose and muguet florals, as well as, in green aldehydic perfumes. Traces of OXANE will add unique effects to any fragrance creation.

## Tenacity

Lasts 1 day  
on a smelling strip.



1 month

3 weeks

2 weeks

1 week

4 days

3 days

2 days

1 day

6 hours

3 hours

2 hours

1 hour

## PHYSICO-CHEMICAL PROPERTIES

appearance	colourless to pale yellow liquid
flashpoint	74°C
vapour pressure	58.56 Pa at 20°C
purity	min 59%
log p (measured)	3.11
molecular weight	160

## STABILITY &amp; PERFORMANCE

RECOMMENDED APPLICATIONS	STABILITY	TYPICAL % USE	SUBSTANTIVITY & REMARKS	
<b>fine fragrances</b>	■■■■	traces - 0.05%	<b>Top note</b>	
<b>shampoo</b>	■■■■	traces - 0.05%	wet: ■■■■	dry: ■■■■
<b>shower gel</b>	■■■■	traces - 0.05%	bloom: ■■■■	
<b>soap</b>	■■■■	traces - 0.05%	foam: ■■■■	dry hand: ■
<b>detergent</b>	■■■■	traces - 0.05%	wet: ■■	dry: ■
<b>softener</b>	■■■■	traces - 0.05%	wet: ■■■■	dry: ■
<b>APC</b>	■■■■	traces - 0.05%	-	
<b>candle</b>	■■	traces - 0.2%	cold wax: ■■	burning: ■