

The image features a close-up of a circular, textured object, possibly a piece of wood or a mineral, with a dark, mottled pattern. The object is set against a background of a light-colored, fibrous material, likely wood. The image is divided into four quadrants by a blue cross. The top-right and bottom-right quadrants are solid blue. The IFF logo is positioned in the top-right blue quadrant.

iff

OPERANIDE

A distinctive creamy soft amber woody
IFF jewel with gourmand nuances.

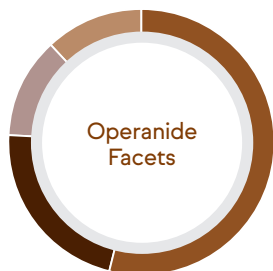
IFF INTRODUCES OPERANIDE

Operanide was first synthesized while extending the chemistry of the Cashmeran® backbone with a ketal group. The addition of Operanide to the line of IFF proprietary amber molecules like Trisamber® and AmberXtreme™ makes this olfactive family very complete.

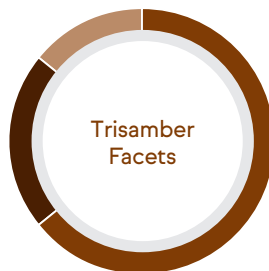
IFF offers an extensive portfolio of ingredients, innovative and ever-evolving, proactively anticipating the needs of consumers.

OPERANIDE

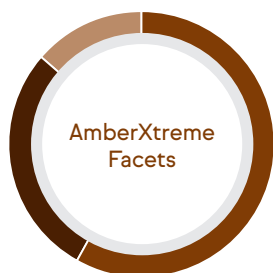
COMPARISON IFF'S AMBERS



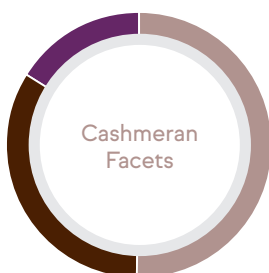
Softest amber, blends very well with AmberXtreme™



Has Patchouli and spicy nuances



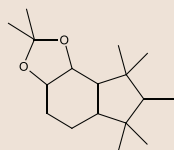
Most powerful amber, lowest vapor pressure, pushes top notes in fragrances



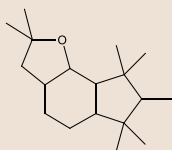
Opulent, powdery, woody, velvety musk nuances, which maintains throughout the fragrances

Amber
 Amber dry
 Woody
 Musk
 Cedarwood
 Powdery

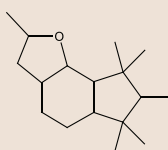
Molecular structures



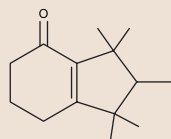
Operanide



AmberXtreme



Trisamber



Cashmeran

OPERANIDE

BACKGROUND

Operanide was first synthesized while extending the chemistry of the Cashmeran® backbone with a ketal group. The addition of Operanide to the line of IFF proprietary amber molecules like Trisamber® and Amber Xtreme™ makes this olfactive family very complete.

GREAT COMBINATIONS

Amber Xtreme™, Cashmeran®, Delta Damascone, Veramoss.

USEFUL IN CREATING

Ambery exotic florals and spicy notes, fresh colognes, soft caring woods, gourmand types.

WHY WE LOVE IT

“Gives a very nice contrast with citrus and cologne notes.”

“It is our most caring amber woody ingredient.”

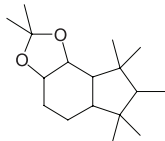
OPERANIDE

2,2,6,6,7,8,8-Heptamethyl-4,5,6,7,8B-hexahydro-3H-indeno[5,4-D][1,3] dioxole

IPC NUMBER 151575

AMBER

Cedar, Woody, Creamy



Non-Biodegradable

NOTE IMPACT

TOP	■ ■ ■	High
HEART	■ ■ ■	Medium
BASE	■ ■ ■	Medium

OLFACTORY DESCRIPTION

A creamy soft powdery amber note with gourmand nuances.

CHEMICAL FORMULA

$C_{17}H_{28}O_2$

OLFACTORY TERRITORY

Primitive

CAS NUMBER

823178-41-2

REACH REGISTRATION

01-0000019329-63

VISUAL DESCRIPTION

Clear colorless liquid

GC SUMMARY

+92%

FLASH POINT

123°C

MOLECULAR WEIGHT

264

TYPICAL USE LEVEL

Up to 5.0%

VAPOR PRESSURE

0.003438 mm Hg @ 23°C

LOG P

6.05

SUBSTANTIVITY

>72 hours

PRODUCT

Fine Fragrance
Shampoo
AP Deo
Soap
Liquid Detergent
Powder Detergent
Fabric Conditioner
Candles
Acid Cleaner
Bleach

PERFORMANCE

Very Good
Very Good
Good
Good
Good
Good
Good
Good
Moderate
Poor

STABILITY

Very Good
Very Good
Good
Good
Very Good
Good
Good
Very Good
Moderate
Poor

OPERANIDE

The most creamy amber in the IFF ingredients portfolio. Diffusivity, woody-ambery and mossy nuances are characteristic qualities.

GREAT COMBINATIONS

AmberXtreme™, Cashmeran®, Delta Damascone, Edenolide, Timbersilk™, Veramoss.

USEFUL IN CREATING

Oriental types, fresh colognes, soft caring woods, gourmand types.

WHY WE LOVE IT

“Gives a very nice contrast with citrus and cologne notes”

“It is our most caring amber woody ingredient”



Scan and see the
Operanide video

PERFUMER QUOTES

“It is a beautiful ambery wood note whose characteristic is a great sillage and lastingness. It is a luxurious woody note.”

Anne Flipo, Master Perfumer

“Operanide shows a great bloom and is softer than Amber Xtreme, it gives volume to the heart of a fragrance.”

Nicolas Beaulieu, VP Perfumer

“Operanide is a fabulous vertical dry wood but has also the power and the volume of a musk. It brings an additional lasting to a fragrance”

Nelly Hachem-Ruiz, Perfumer

OPERANIDE

HARMONY - 17101



Description: Citrus Bergamot, Fresh Lavender, Sheer Musk

Application: 10% in Alcohol

HARMONY - 17101

Citrus	Bergamot Oil Cp		4.00
Floral	Kharismal Super	IFF	7.50
Aromatic	Lavandin Grosso Oil	 LMR	7.80
Musk	Galaxolide® 50%	IFF	78.70
Amber	OPERANIDE	IFF	2.00

TOTAL: 100.00

Remarks:  Renewable ingredients, defined by IFF as ingredients that contain more than 50% carbon from renewable sources.

OPERANIDE

HARMONY - 17103



Description: Woody, Spicy, Creamy Lactonic, Powdery, Musk

Application: 10% in Alcohol

HARMONY - 17103

Spicy	Pepper Pink CO2 LMR CSM		LMR	4.50
Musk	Edenolide		IFF	58.80
Amber	OPERANIDE		IFF	5.40
Woody	Patchouli Heart N°3		LMR	10.80
	Cedramber®		IFF	20.50
TOTAL:				100.00

Remarks:  Renewable ingredients, defined by IFF as ingredients that contain more than 50% carbon from renewable sources.



OPERANIDE

HARMONY - 18006



Description: Spicy Fresh, Sweet Resinous Aromatic, Balsamic Powdery Musk
Application: 10% in Alcohol

HARMONY - 18006

Citrus	Elemi Oil		2.00
Spicy	Cardamom Oil Guatemala		2.00
Musk	Zenolide	IFF	12.00
Amber	AmberXtreme™	IFF	1.00
	OPERANIDE	IFF	12.00
Woody	Timbersilk™	 IFF	68.00
	Patchouli Oil Light	 LMR	3.00
			TOTAL: 100.00

Remarks:  Renewable ingredients, defined by IFF as ingredients that contain more than 50% carbon from renewable sources.

OPERANIDE

HARMONY - 18007



Description: Amber Spice, Rosewood, Vanilla, Sandal Leather Musk

Application: 10% in Alcohol

HARMONY - 18007

Musk	Zenolide	IFF	96.00
Amber	OPERANIDE	IFF	2.80
	AmberXtreme™ 10%	IFF	1.20
			TOTAL: 100.00

AWAKEN THE
EXTRAORDINARY
SENSES FOR A
BETTER WORLD

iff INGREDIENT SOLUTIONS
FOR A BETTER WORLD



www.iff.com